

Declaration of Conformity & Technical Documentation

Identity of the supplier

Company name:	Creativ Company A/S
Address:	Rasmus Færchs Vej 23, 7500 Holstebro, Denmark
E-mail address:	compliance@cchobby.dk
This declaration of conformity is issued under the sole responsibility of:	The manufacturer Creativ Company A/S

Object of declaration

The subject of the declaration is the following products with their product name corresponding item numbers:

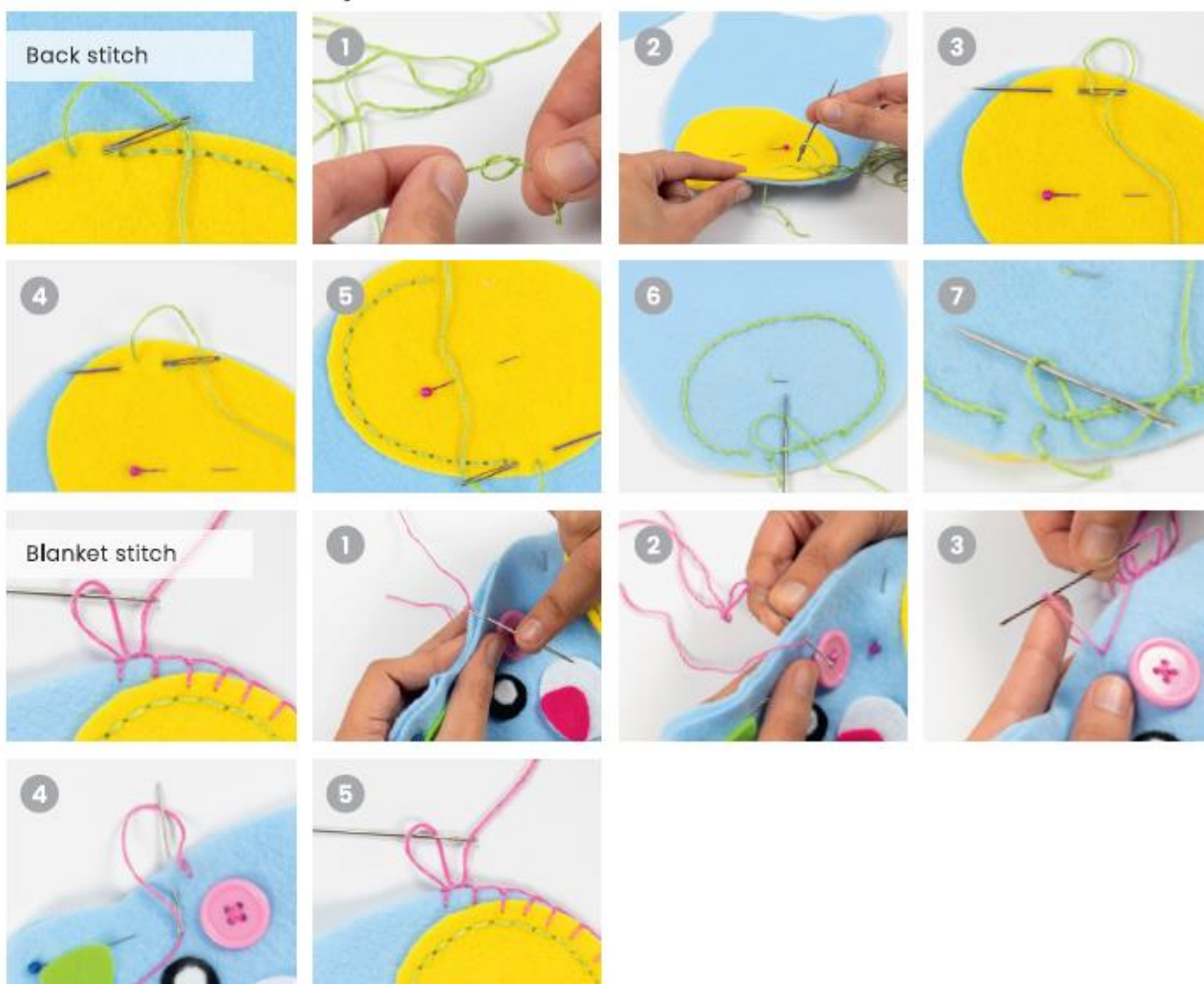


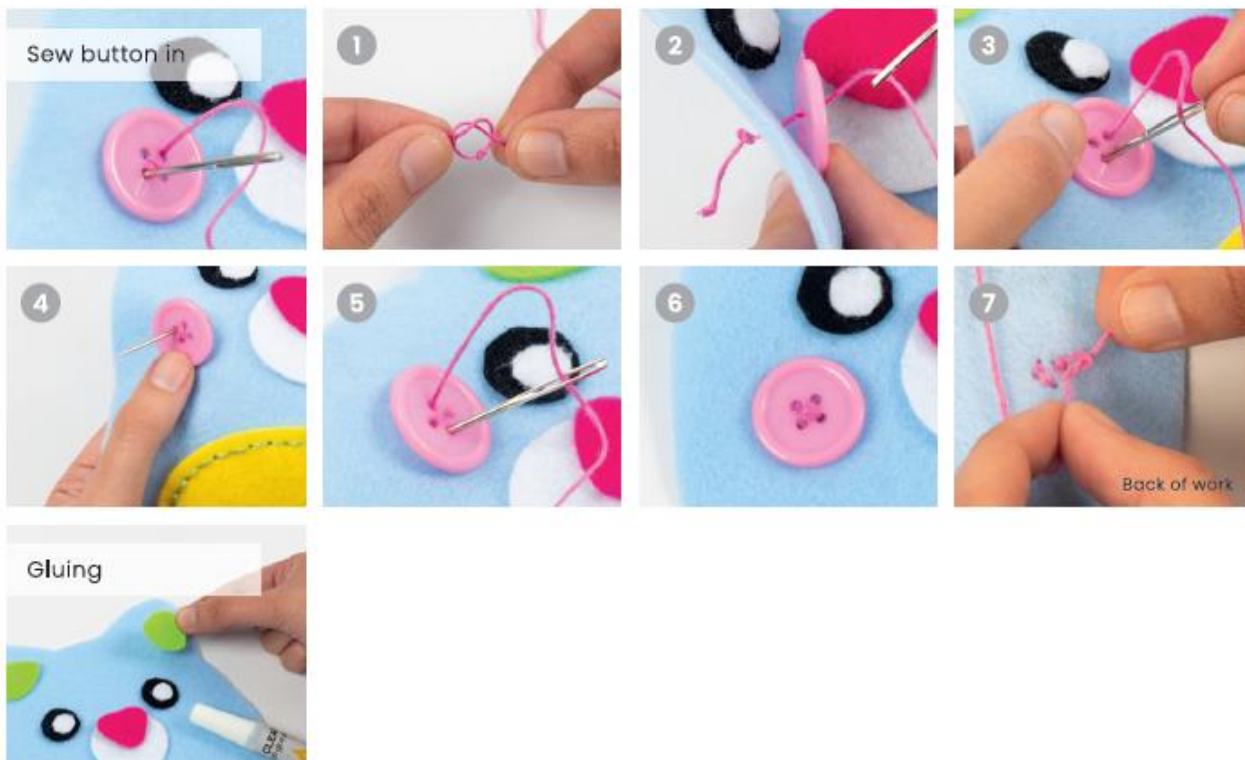
Product description

Learn to sew with this kit. Contains all the materials and instructions you need

Instructions of use

Learn these techniques →





Stuffed animal



The object of the declaration is in conformity with the relevant EU harmonization legislation
(see specifications in Appendix 1)

Toy Safety Directive 2009/48/EC
Regulation 1907/2006/EC (REACH) (see specifications in appendix 1)
Regulation 2019/1021/EU on persistent organic pollutants (POP)

Reference to the relevant harmonised standards used, or reference to the specifications and / or tests to which conformity is declared

Title	Reference
Safety of toys – Part 1: Mechanical and Physical	EN 71-1:2014+A1:2018
Safety of toys – Part 2: Flammability	EN 71-2:2020
Safety of toys – Part 3: Migration of Certain Elements	EN 71-3:2019+A1:2021
Polycyclic Aromatic Hydrocarbons (PAHs)	REACH Annex XVII, entry 50
Total Cadmium content	REACH Annex XVII, entry 23
Phthalate content	REACH Annex XVII, entry 51 & 52
Banned AZO dyes	REACH Annex XVII entry 43

Safety information

Warning. Functional sharp point/edge. Use with care. Small parts. Choking hazard. Long cord. Strangulation Hazard. Pieces may break off and cause a choking hazard. To be used under supervision of an adult.



Markings, claims, and certifications

Type	Specific objects covered
CE / UK CA	All objects of the declaration

Notified body

N/A

Signature

Holstebro


(place)

Charlotte Pauli Adolphsen
Compliance

(name and function)

13-09-2024

(date)



(signature)

Appendix 1 – Specifications

	Toys <i>Products intended for children under 14 years – also including modelling mass, beads, pens and markers, paper face masks, paints</i>
Creativ Company requirements:	Requirement / Max level in the final product
Compliance to Regulation 1907/2006/EC (REACH) including Annex XVII	Full compliance
CANDIDATE LIST OF SUBSTANCES of very high concern Link: candidate-list-table	Not allowed
Substances on the Authorisation List (REACH, Annex XIV) Link: Authorisation List	Not allowed
Compliance to Regulation 2019/1021/EU on persistent organic pollutants (POP)	Full compliance
Compliance to directive 2009/48/EC (Toys) and its amendments	Full compliance Keeping all technical documentation for 10 years, including manufacturing and raw material protocols and traceability from raw material to finished product

Creativ Company requirements:	Requirement / Max level in the final product
<p>Specific for plastic and rubber parts: REACH Annex XVII entries to be observed: Substances restricted under REACH (Annex XVII)</p>	
<p>POLYCYCLIC AROMATIC HYDROCARBON (PAH) Entry 50 Benzo[a]pyrene (BaP) (CAS No 50-32-8) Benzo[e]pyrene (BeP) (CAS No 192-97-2) Benzo[a]anthracene (BaA) (CAS No 56-55-3) Chrysen (CHR) (CAS No 218-01-9) Benzo[b]fluoranthene (BbFA) (CAS No 205-99-2) Benzo[j]fluoranthene (BjFA) (CAS No 205-82-3) Benzo[k]fluoranthene (BkFA) (CAS No 207-08-9) Dibenzo[a,h]anthracene (DBAhA) (CAS No 53-70-3)</p>	<p>0.5mg/kg (0.5ppm) each</p>
<p>TOTAL HEAVY METALS Entry 23 Cadmium (Cd) (CAS No 7440-43-9) and its compounds</p>	<p>0.01% (100ppm) (for plastic) 0.1% (1000ppm) (for coating)</p>
<p>FLAME RETARDANTS Entry 45 Diphenylether, octabromo derivative</p>	<p>0.1% (1000ppm)</p>
<p>PHthalATES Entry 51 Bis (2-ethylhexyl) phthalate (DEHP) (CAS No 117-81-7) Dibutyl phthalate (DBP) (CAS No 84-74-2) Benzyl butyl phthalate (BBP) (CAS No 85-68-7) Diisobutyl phthalate (DIBP) CAS No 84-69-5 Entry 52 Di-'isononyl' phthalate (DINP) (CAS No 28553-12-0 and 68515-48-0) Di-'isodecyl' phthalate (DIDP) (CAS No 26761-40-0 and 68515-49-1) Di-n-octyl phthalate (DNOP) (CAS No 117-84-0)</p>	<p>Individually or in combination with the other phthalates in entry 51: 0.1% (1000ppm) Individually or in combination with the other phthalates in entry 52: 0.1% (1000ppm)</p>
<p>Persistent organic pollutants (POP) of specific focus: Regulation 2019/1021/EU (POP)</p>	
<p>SCCPs Alkanes C₁₀-C₁₃, chloro (short-chain chlorinated paraffins)</p>	<p>0.15% (1500ppm)</p>
<p>FLAME RETARDANTS Deca-bromodiphenyl ether (decaBDE) (CAS No 1163-19-5)</p>	<p>Addition not allowed 0.001% (10ppm)</p>

Creativ Company requirements:	Requirement / Max level in the final product
<p>Specific for metal parts: REACH Annex XVII entries to be observed: Substances restricted under REACH (Annex XVII)</p>	
<p>NICKEL (CAS No 7440-02-0) and its compounds Entry 27 Nickel release (for metals with skin contact) Nickel release (piercing products)</p>	<p>0,5 µg/cm²/week 0,2 µg/cm²/week</p>
<p>TOTAL HEAVY METALS Entry 23 Cadmium (Cd) (CAS No 7440-43-9) and its components</p>	<p>0.01% (100ppm)</p>
<p>Entry 63 Lead (Pb) (CAS No 7439-92-1) and its compounds</p>	<p>0.05% (500ppm)</p>
<p>Entry 18 Mercury (Hg) (CAS No 7439-97-6) and its compounds</p>	<p>100ppm¹</p>

¹ Danish BEK 73 of 25/01/2016